

o print the first page to check accuracy

---

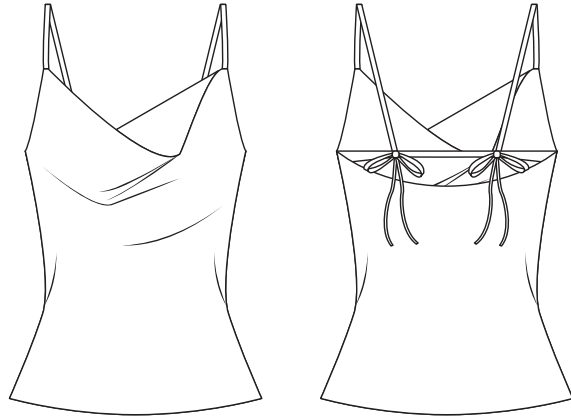
the box should measure 5 cm. x 5 cm.

---

print "actual size" without scaling

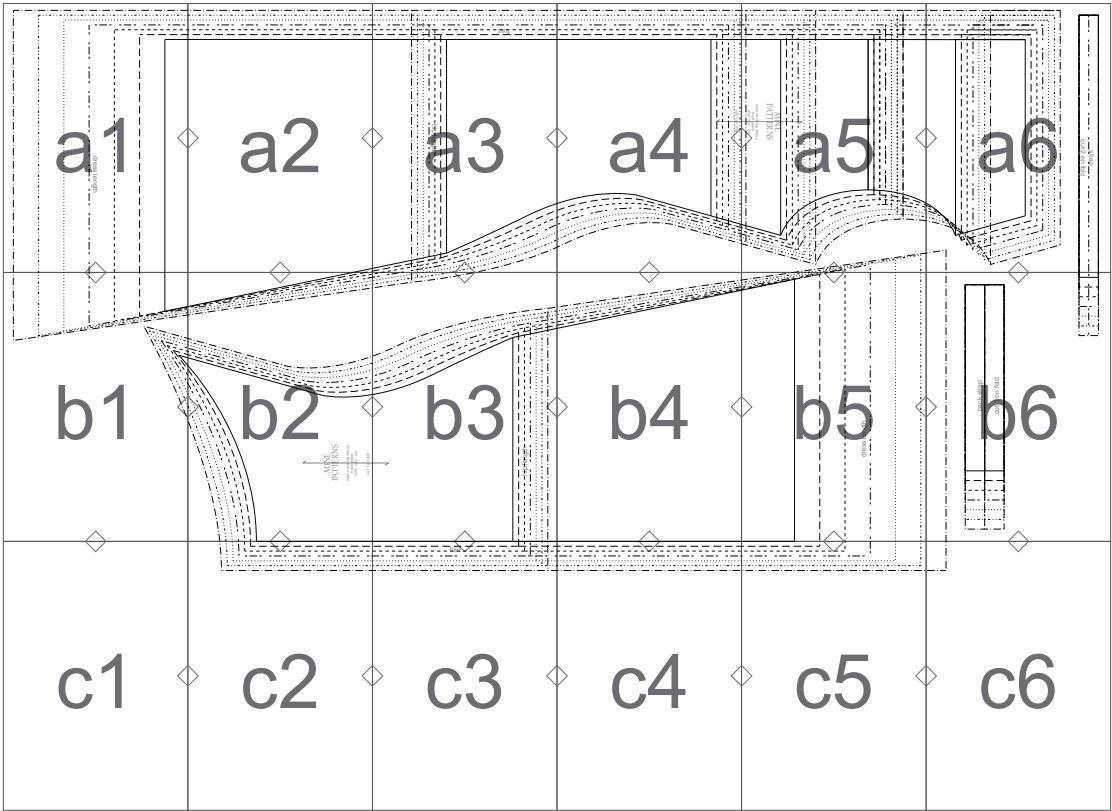
---

cowl neck top/dress



size: xxs - xxi

sewing pattern layout



size lines

XXS \_\_\_\_\_

XS - - - - -

S - - - - -

M - - - - -

L .....

XL - - - - -

XXL - - - - -

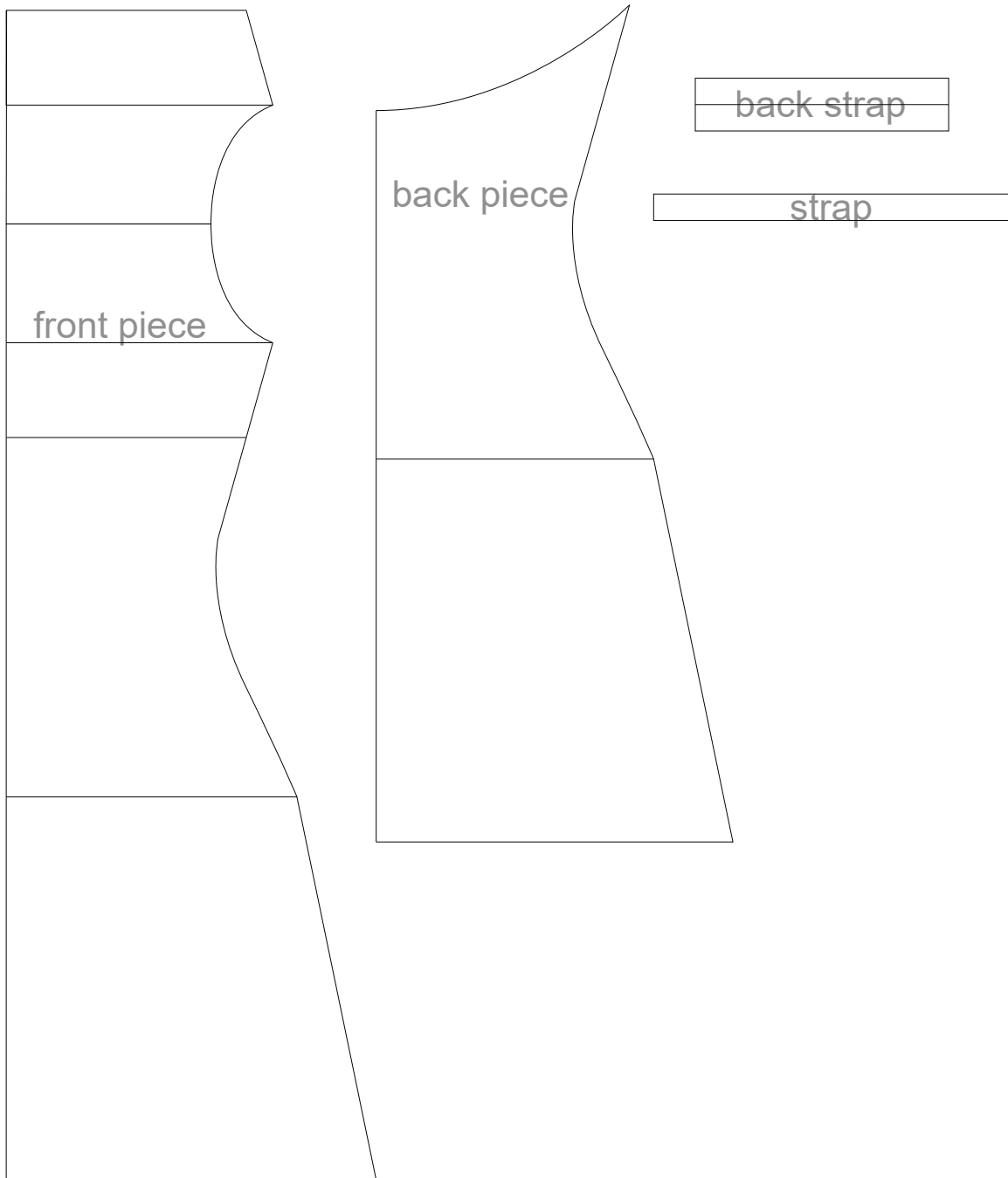
pattern pieces

front piece - cut 1 on fold

back piece - cut 1 on fold

strap - cut 2 on fold

back strap - cut 1 on fold



\*NOTE: seam allowance is NOT added  
add desirable seam allowance

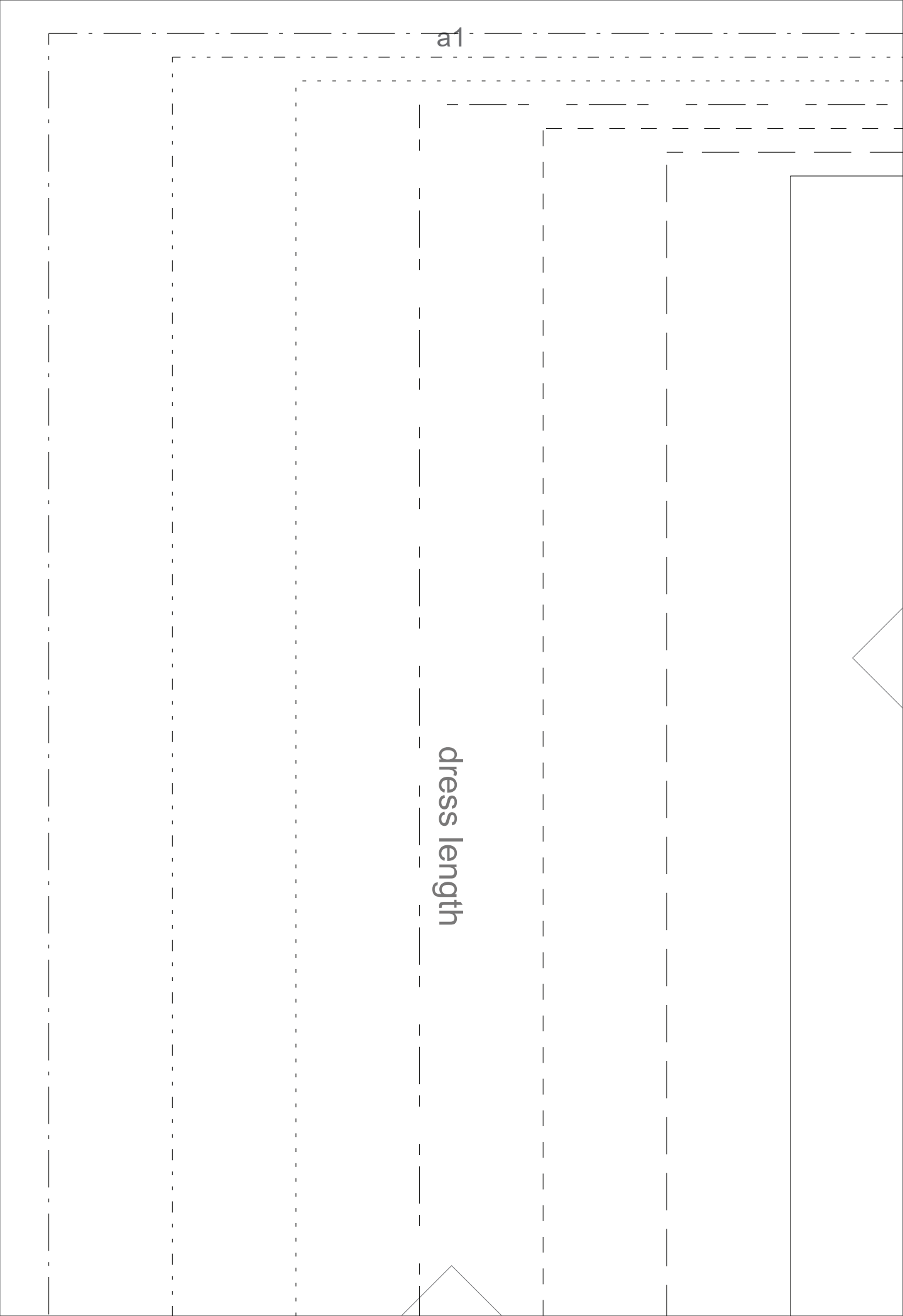
size chart

size	xxs	xs	s	m	l	xl	xxl
chest circumference	76	80	84	88	92	96	100
bust circumference	80	84	88	92	96	100	104
waist circumference	60	64	68	72	76	80	84
hip circumference	86	90	94	98	102	106	110

\*all measurements are in centimeters

a1

dress length

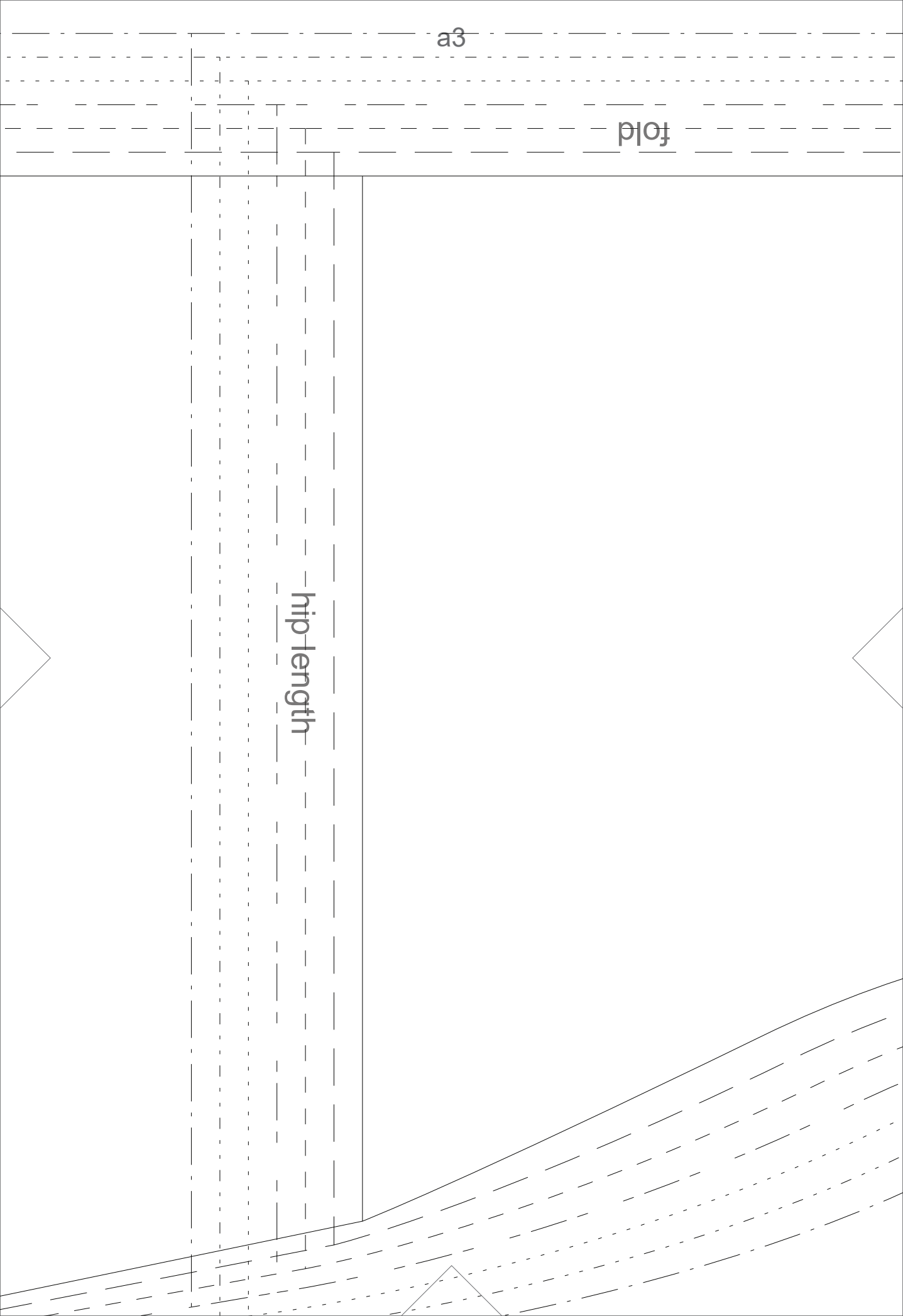


a2

a3

fold

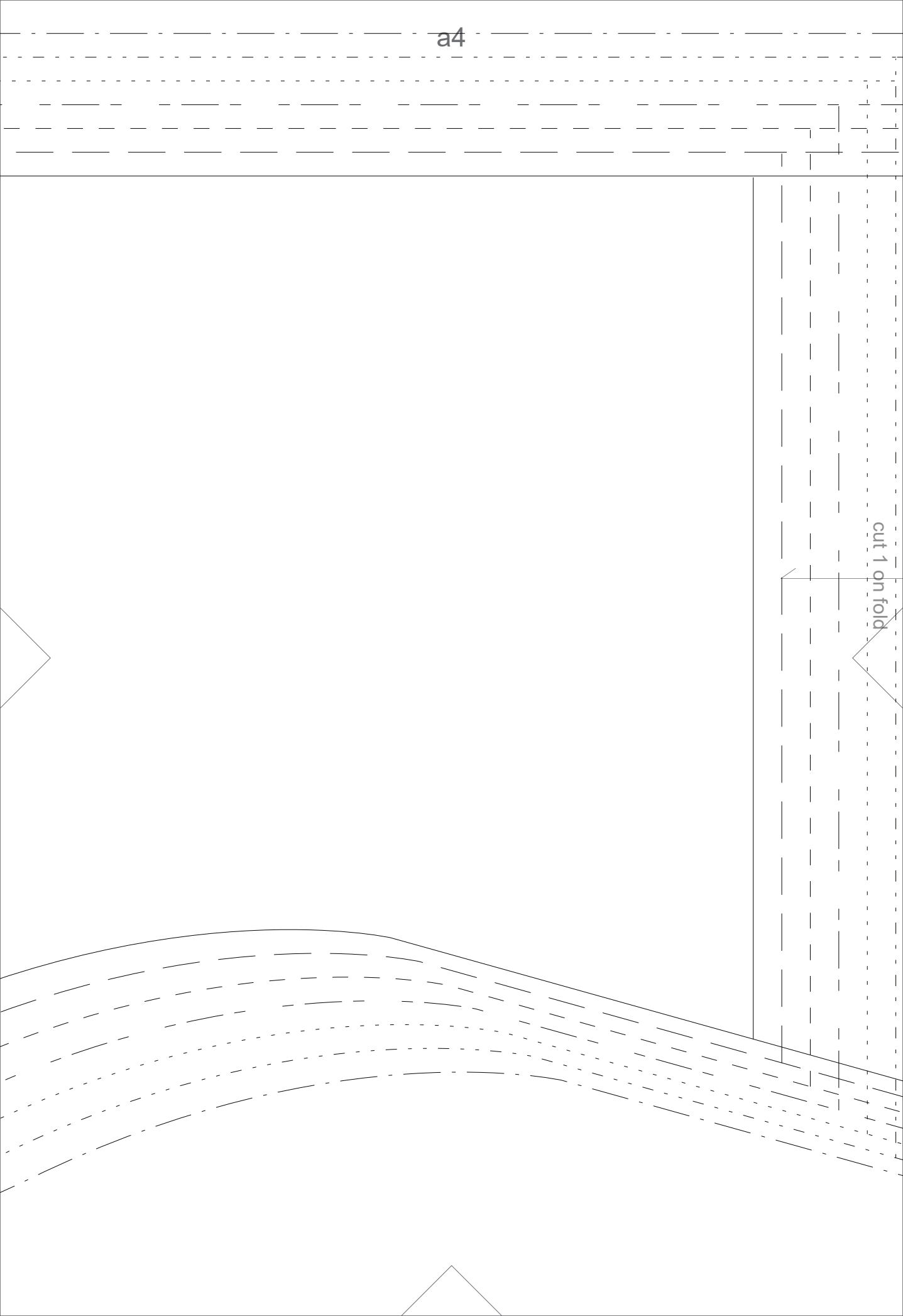
hip length





a4

cut 1 on fold



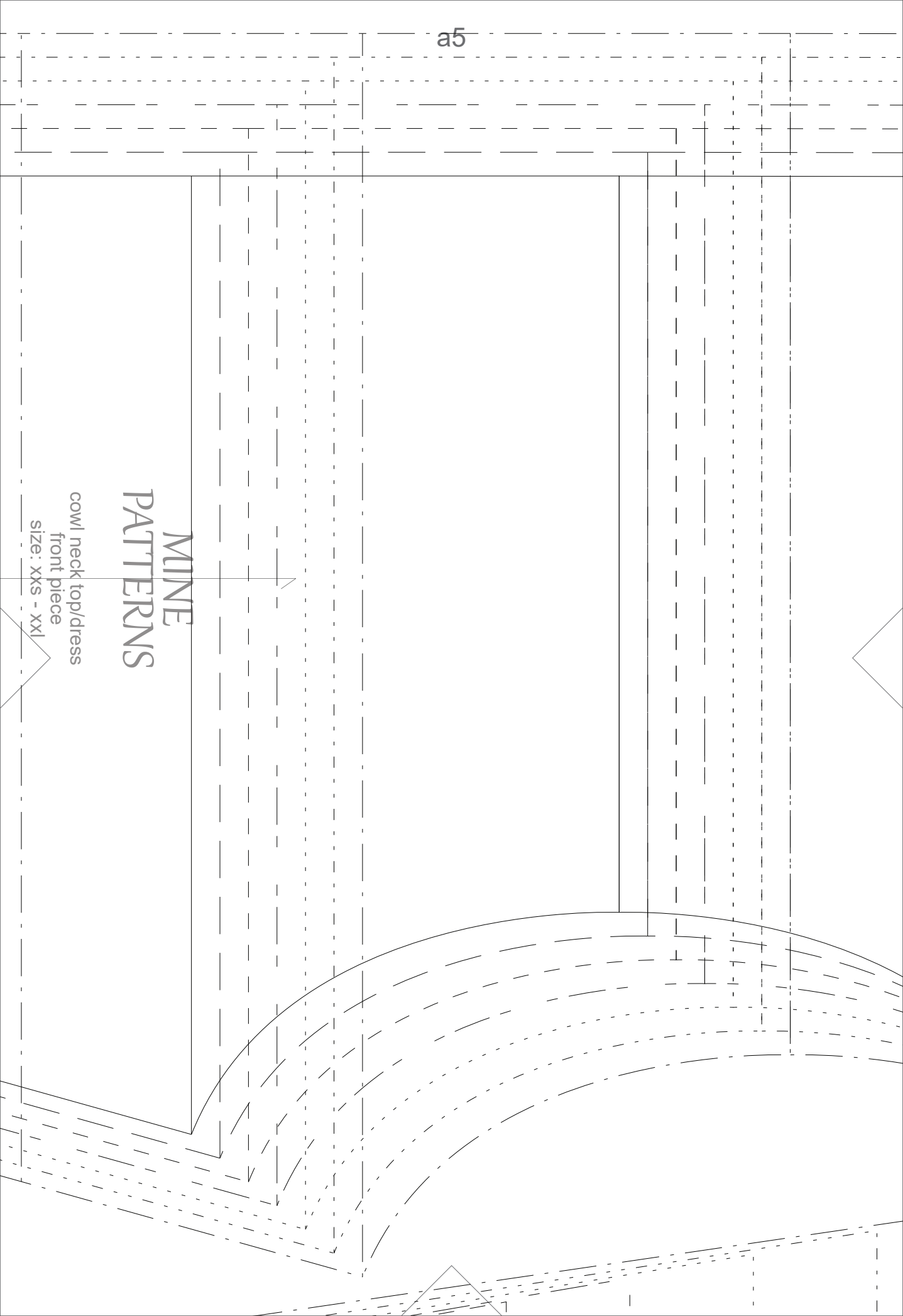
a5

MINE  
PATTERNS

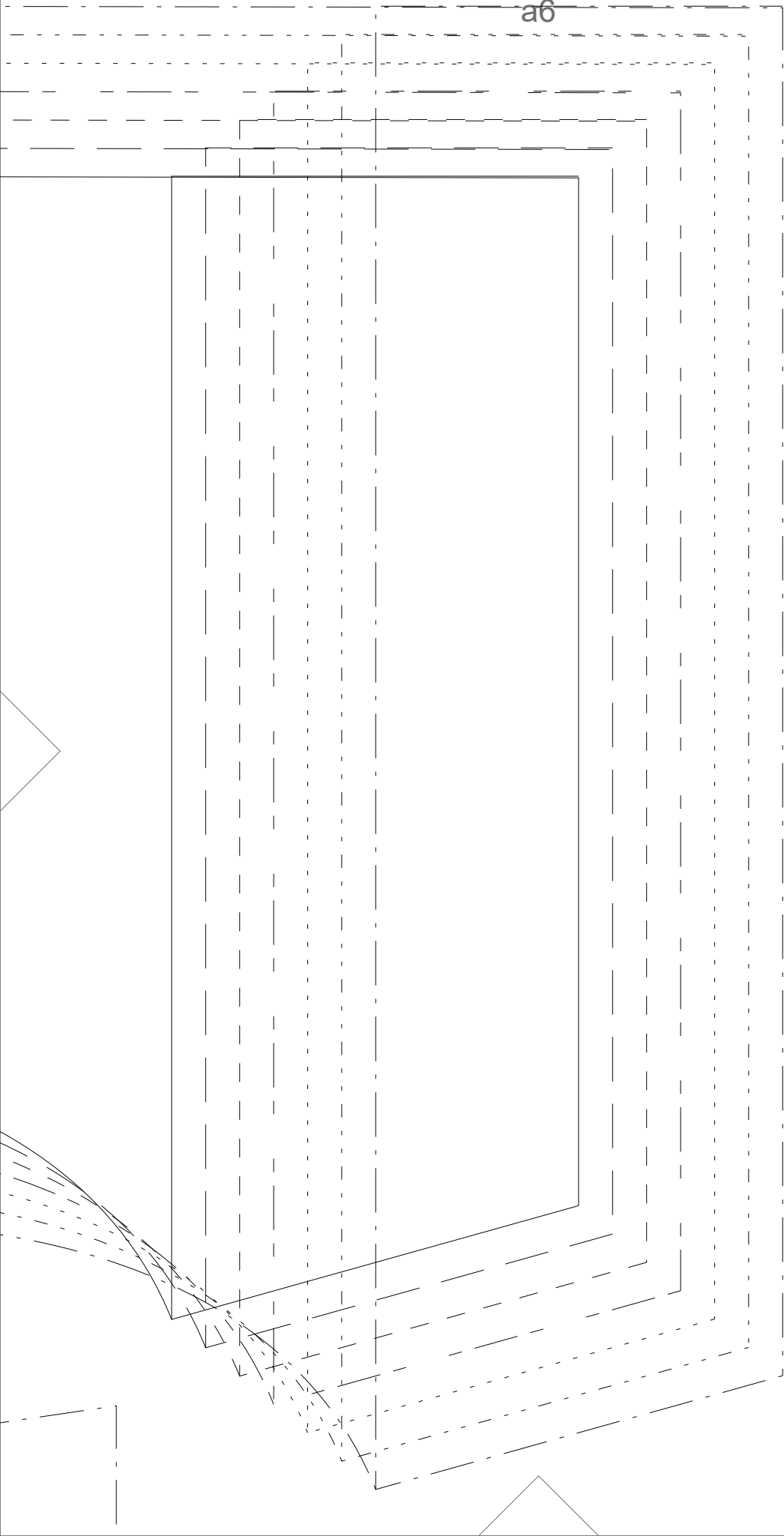
cowl neck top/dress

front piece

size: xxs - xxl



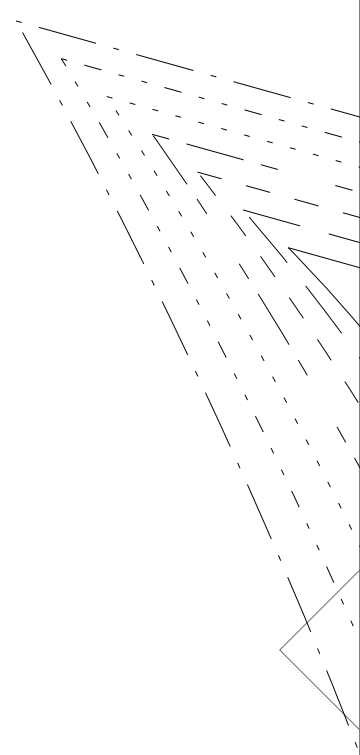
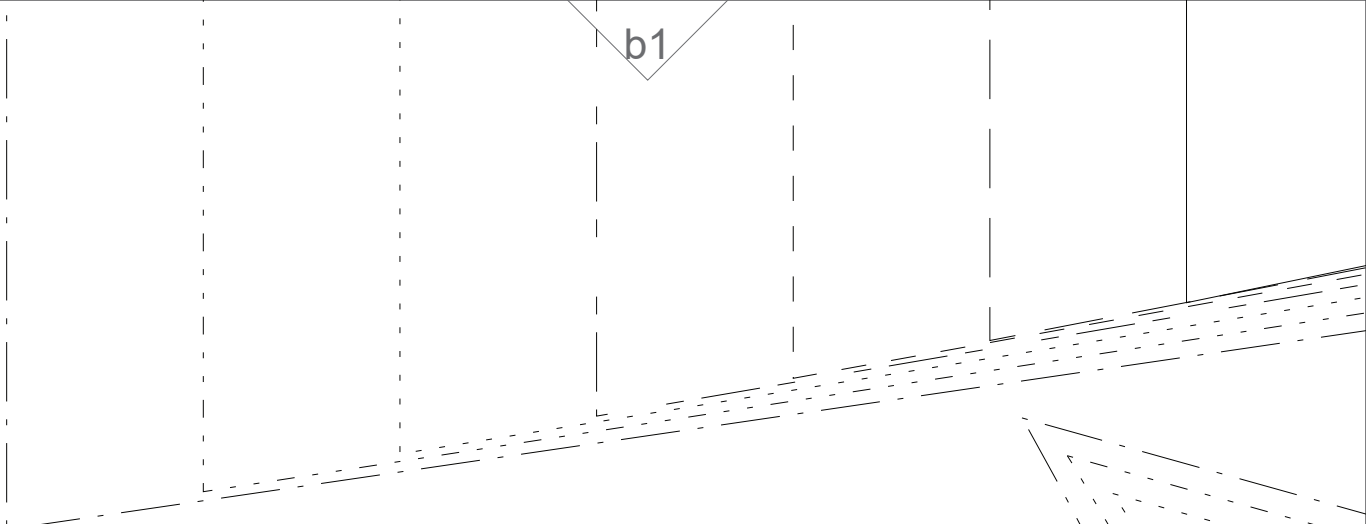
a6



strap

cut 2 on fold

b1



b2

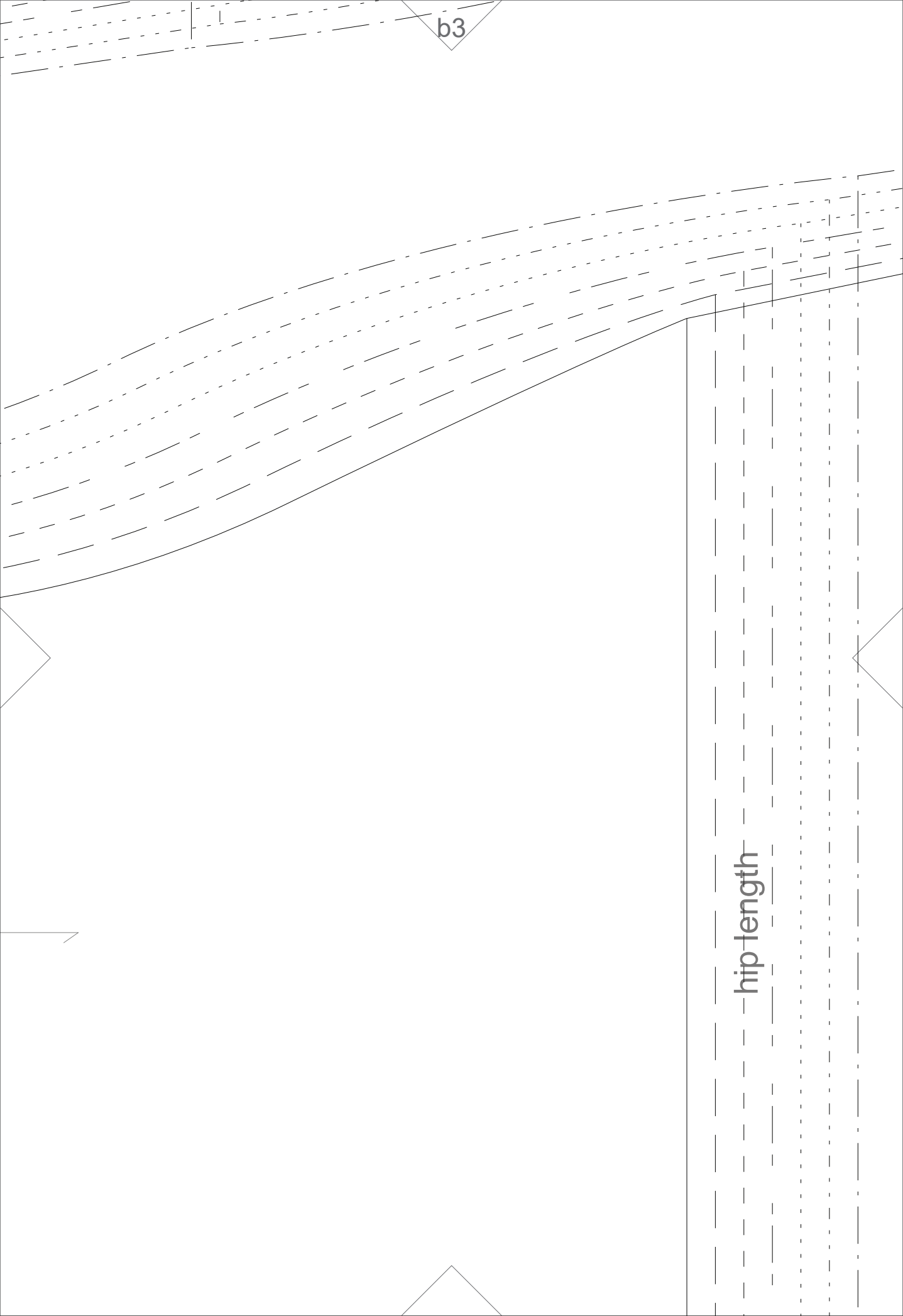


# MINE PATTERNS

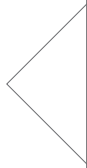
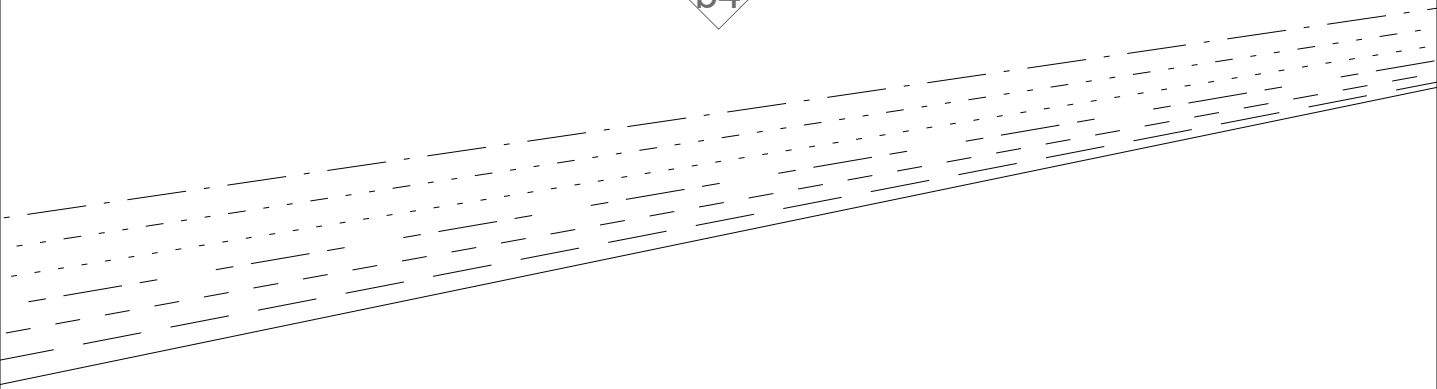
cowl neck top/dress  
back piece  
size: xxs - xxl

cut 1 on fold

b3



b4



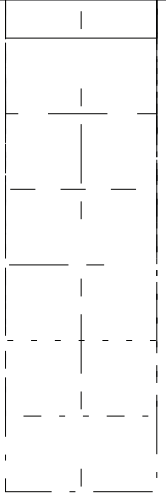
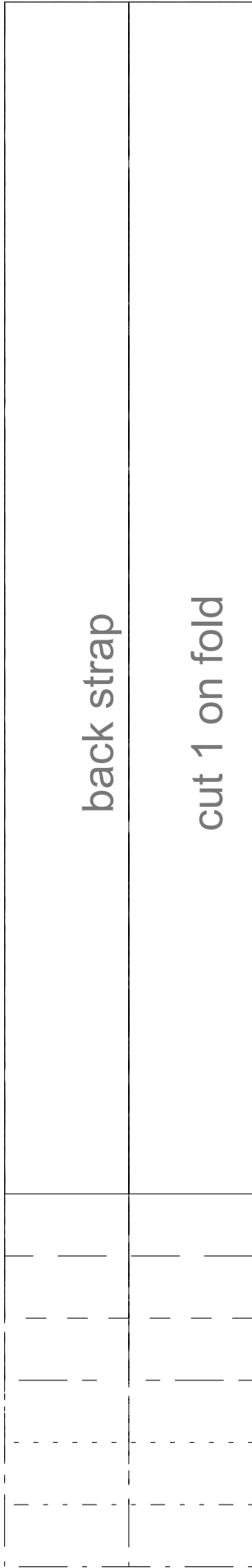
b5

dress length



back strap

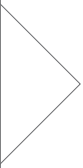
cut 1 on fold



c1

c2

fold c3



c4

c5

c6